

The American Textile History Museum

The American Textile History Museum features the following:

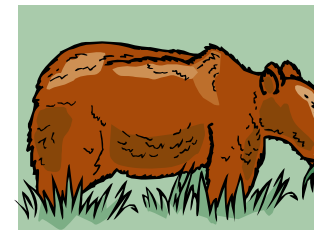
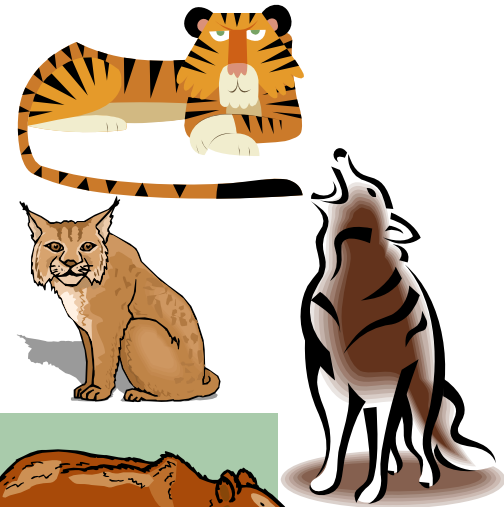
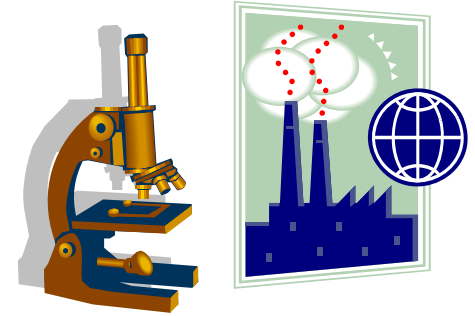
- The *Textile Revolution - An Exploration Through Space and Time* exhibition with scenes that tell the story of textile history in America from the 18th to the 21st century.
- An extensive collection of textile tools, machinery and artifacts.
- Videos on flax processing, roller printing, and immigration, and more.
- Mill machinery demonstrations.
- Lots of interactive stations throughout the Museum
- Special changing exhibitions.

The **Textile Learning Center** or "TLC," a hands-on area for families, is accessible with general admission.

Revised August 2009
Subject to Change

The American Textile History Museum
491 Dutton Street
Lowell, MA 01854-4221
(978) 441-0400
www.athm.org

Boy Scout and Cub Scout Programs



...at The
**American Textile
History Museum**



The American Textile History Museum's instructors are registered with the Boy Scouts of America, and can sign off on blue cards. All programs are completed in one visit.

Boy Scout Programs

TEXTILE MERIT BADGE

(3 ½ - 4 hrs. \$10/scout)

Cub Scout Programs

TIGER CUB

(1 ½ hrs. each, \$6/scout)

Achievement 1 - **Making My Family Special**

(**G** only, so combine this with another program at no extra cost)

Elective 15 - **Our Colorful World**

Elective 18 - **Sew a Button**

Elective 47 - **Reduce, Reuse, Recycle**

WOLF

(2 hrs. each, \$6/scout)

Achievement 10 - **Family Fun (C** only, so combine this with another program at no extra cost)

Elective 2 - **Be an Actor**

Elective 4 - **Play a Game**

Elective 10 - **American Indian Lore**

BEAR

(2 hrs. each, \$6/scout)

Achievement 3 - **What Makes America Special**

Achievement 8 - **The Past is Exciting and Important**

Achievement 10 - **Family Fun (A** only, so combine this with another program at no extra cost)

Elective 24 - **American Indian Life**

WEBELOS

(3 hrs., \$8/scout)

Mental Skills Group Activity Badge - **ARTIST**

Note: Please allow extra time to enjoy the Museum exhibitions and play areas.

Fees

- \$6 per scout [except \$8/scout for Artist badge and Textile Merit Badge]
- A \$60 minimum applies (counting participating scouts) per program.
- Full payment is made upon arrival.
- Fee includes general Museum admission.
- No charge for 1 adult per group; additional adults pay \$6 [or \$8]

Hours

These programs are available whenever the ATHM is open. Regular Museum hours are:

Wednesday-Sunday 10a.m. - 5p.m.

(Call for special arrangement options, if needed)

Questions or Reservations

Email reservations@athm.org or phone (978) 441-0400 x 250.

American Textile History Museum
491 Dutton St. Lowell, MA 01854

General Museum Admission

- \$8 for adults 17 and over
- \$6 for children 6-16, seniors, and students with i.d.
- Free for children under 6.
- Free for Museum members.
- Group rates available.

Directions

- The Museum, adjacent to Lowell's National Historical Park, is located 35 miles north of Boston.
- Take Route 495 North or South to the Lowell Connector ---(exit 35C.)
- Take the Lowell Connector to exit 5B (Thorndike Street)
- Follow Thorndike Street through four sets of traffic lights.
- Bear right at 4th traffic light onto Dutton Street.
- Museum entrance and parking lot will be on your left. Red brick building with green and yellow banners.

Parking

Free parking in the Museum's parking lot just outside of the building.

Special Needs Facilities

Wheelchair access and elevator.

Visit our Website

Visit us online at www.athm.org for pictures and more information about the American Textile History Museum. Scout programs can be found under Education on the top menu bar.